

# CASE STUDY



STAGE HOUSE  
WIMBLEDON



**DEVELOPMENTS**  
WHERE INNOVATION MEETS DESIGN



## STAGE HOUSE WIMBLEDON

### CASE STUDY





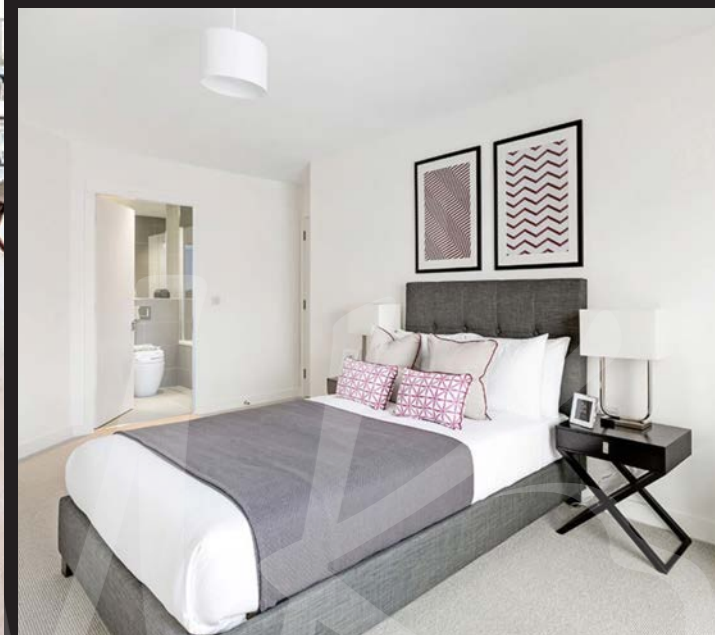
## STAGE HOUSE WIMBLEDON

Project Value: £6.3m

Duration: 24 months

The development is an exceptional collection of twenty-one luxury apartments, each with considered interiors and striking architectural design, at a site close to the centre of Wimbledon which was previously occupied by several garages – which were demolished to enable construction.

The structure of the building was formed as a concrete frame with a Metsec curtain walling system. Brick and aluminium finishes were applied to complete the envelope.







## STAGE HOUSE WIMBLEDON

Tel: 020 8286 7996  
Email: [info@em-k.co.uk](mailto:info@em-k.co.uk)

[www.em-k.co.uk](http://www.em-k.co.uk)

EMK Developments Ltd,  
Oakwood House,  
Bucks Green, Rudgwick,  
Horsham RH12 3JJ

